



LONESTAR PRESTRESS MFG. INC.

9316 Reid Lake Houston, TX 77064
TEL. (713) 896-0994, FAX (713) 896-0411 www.lonestarprestress.com

DWG.: CATALOG

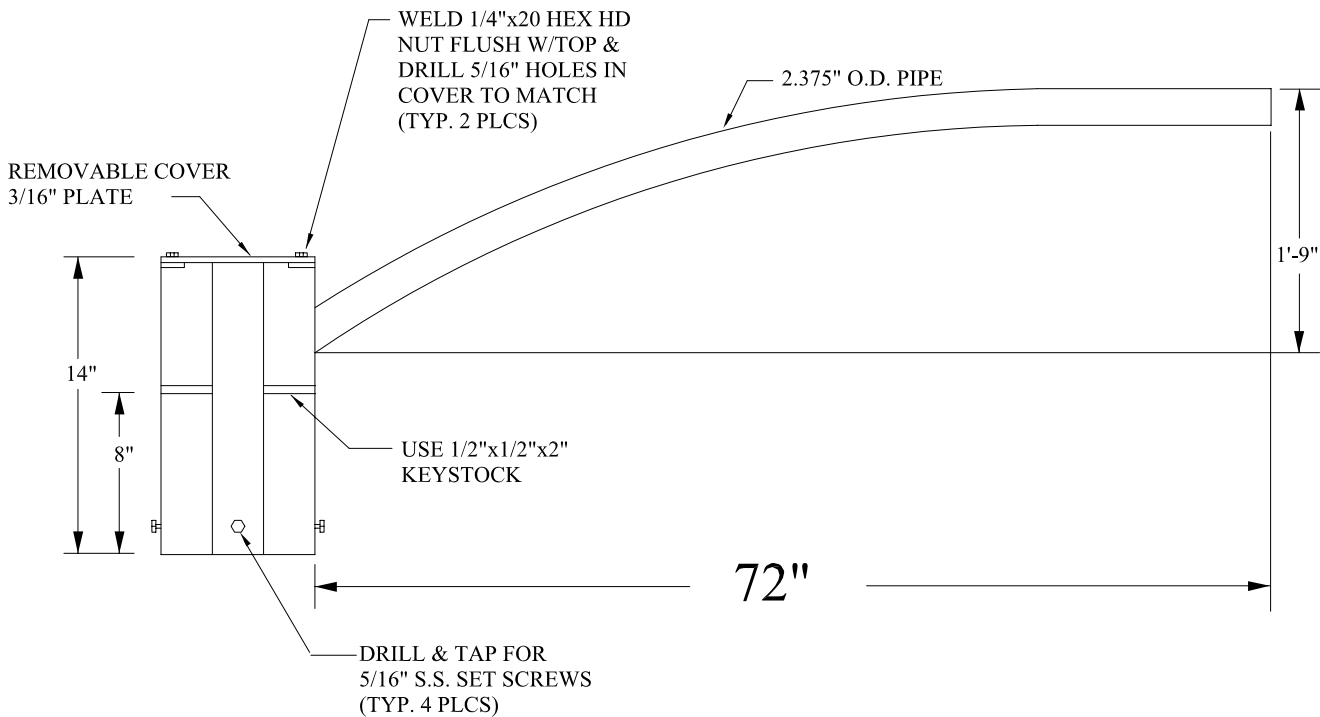
CAT.: 961069

DATE:

PROJECT:



KEYWAY STOPS TO BE WELDED ON TOP SIDE ONLY. BOTTOM SIDE MUST BE SMOOTH SO CAP WILL SIT LEVEL ON POLE



NOTES

- 1.) ALL PARTS SHALL BE STEEL
- 2.) ALL TOLERANCES SHALL BE 1/16"
- 3.) MATERIAL TO BE 3/16" ALUMINUM UNLESS OTHERWISE NOTED.
- 4.) ALL THREADS ARE TO BE CHASED AFTER FABRICATION
- 5.) INSTALL 1/4"x20x1/4" S.S. BOLTS IN COVER .
- 6.) BRACKET TO BE ALUMINUM FINISH AFTER FABRICATION

DESCRIPTION:

6' UPSWEEP OCTAGONAL SINGLE ARM BRACKET

FINISH:

GALVANIZED STEEL

QTY: