



**LONESTAR PRESTRESS MFG. INC.**

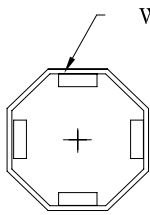
9316 Reid Lake Houston, TX 77064  
TEL. (713) 896-0994, FAX (713) 896-0411 www.lonestarprestress.com

DWG.: CATALOG

CAT.: 967894

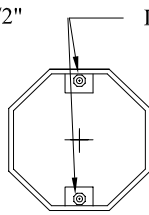
DATE:

PROJECT:



WELD 1/2"x1/2"x1-1/2"  
POLE STOPS  
(TYP. 4 PLCS)  
(SEE NOTE 4)

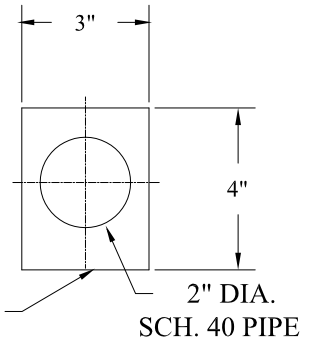
SECTION  
"A-A"



DRILL AND TAP  
1/4"x 20 HOLES  
FLUSH W/TOP

SECTION  
"B-B"

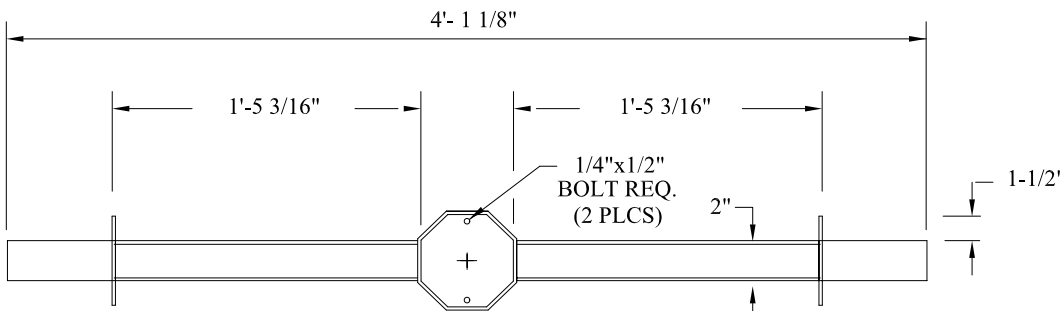
NOTE:  
DRILL IN COVER  
HOLES TO MATCH  
(2PLCS)



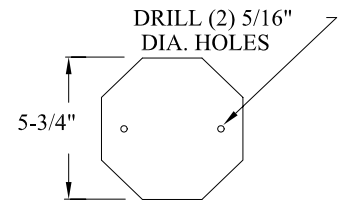
3/16" THK.  
ALUMINUM

2" DIA.  
SCH. 40 PIPE

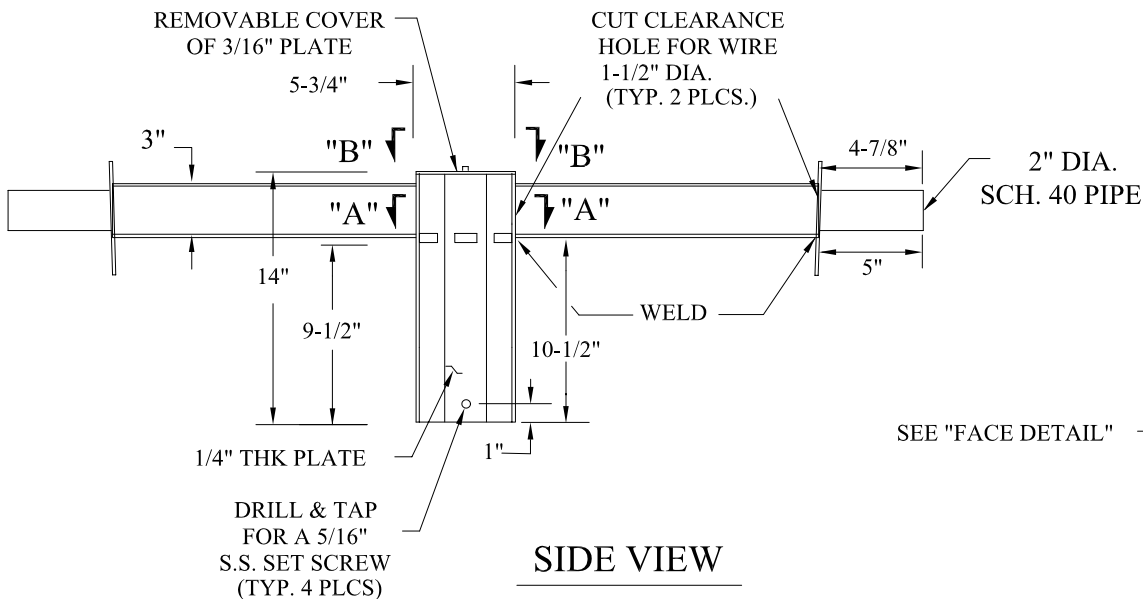
FACE MTG  
DETAIL



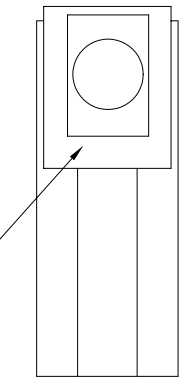
TOP VIEW



COVER  
DETAIL



SIDE VIEW



END VIEW

**NOTES:**

1. BREAK ALL SHARP EDGES.
2. COVER MUST FIT FLUSH WITH TOP.
3. MATERIAL TO BE 1/4" ALUMINUM UNLESS OTHERWISE NOTED.
4. PLATE WELDED ON TOP SIDE ONLY.  
BOTTOM SIDE MUST BE SMOOTH SO CAP WILL SIT LEVEL ON POLE.
5. PAINT ALL EXPOSED SURFACES DARK BRONZE.

**DESCRIPTION:**

**ALUMINUM DOUBLE ARM  
LIGHT BRACKET**

**FINISH:**

ALUMINUM

**QTY:**