



**VALERO**  
**McKEE REFINERY**  
**HEART CUT REFORMAT**  
**OSBL PROJECT**

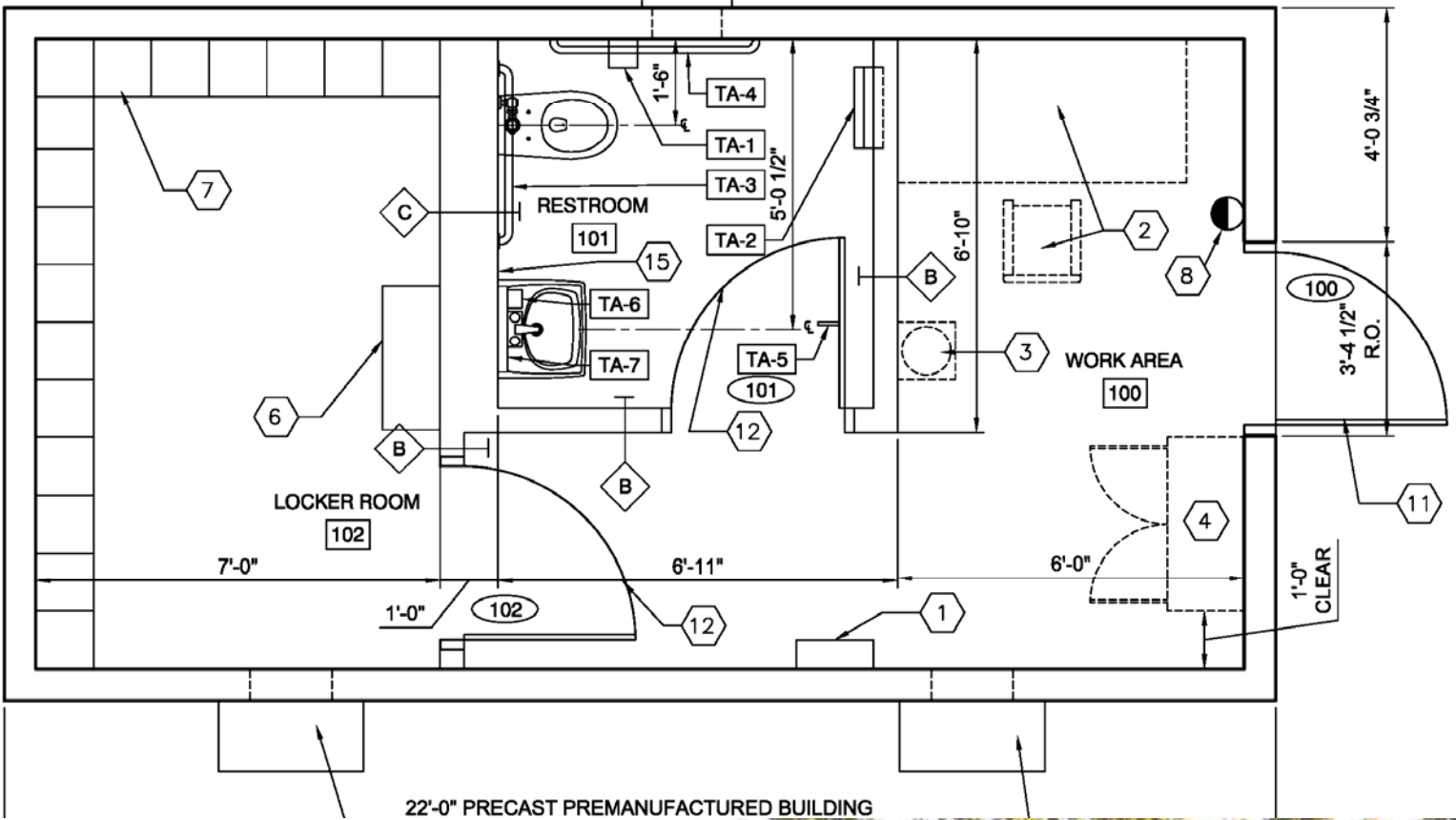
**JULY 2, 2010**

**PROJECT #55221**



























**WARNING**  
DO NOT REMOVE COVER OR USE  
WITH LIFTED COVER UNDER ANY  
FACTORY RELATED CIRCUIT BREAKER  
ASSEMBLY ONLY

The main electrical panel features two vertical rows of circuit breakers. The left row contains 12 breakers, each with a black handle labeled '20A' and a white label with technical specifications. The right row contains 12 breakers, with handles labeled '20A' and '2POLE 15A'. The breakers are connected to a central busbar system consisting of two vertical copper bars. At the top, a horizontal busbar with 12 terminals is connected to the main panel busbars. On the right side, there are 12 terminals numbered 14 through 25. A pink cloth is visible at the bottom of the panel.

INSULATE  
NEUTRAL B...







DP-05-#4

COOPER Crouse-Hinds  
SNAP SWITCH FOR HAZARDOUS LOCATION  
ON  
CAT. NO. EDS2T29  
1 P  
VOLTS 125VAC 277VAC  
AMPS 20 20  
HP  
WARNING TO PREVENT  
IF HERE, DISCONNECT  
BEFORE OPENING  
© Cooper, New York 10011 USA 3210 6207003821



